



## REGIONAL SPECIALISED METEOROLOGICAL CENTRE-TROPICAL CYCLONES, NEW DELHI TROPICAL WEATHER OUTLOOK

DEMS-RSMC TROPICAL CYCLONES NEW DELHI DATED 21.05.2025

**TROPICAL WEATHER OUTLOOK FOR THE NORTH INDIAN OCEAN (THE BAY OF BENGAL AND THE ARABIAN SEA) VALID FOR THE NEXT 168 HOURS ISSUED AT 0700 UTC OF 21.05.2025 BASED ON 0300 UTC OF 21.05.2025.**

### BAY OF BENGAL:

Yesterday's upper air cyclonic circulation over westcentral Bay of Bengal adjoining south Andhra Pradesh & north Tamil Nadu moved inland and lay over central parts of Andhra Pradesh & adjoining south Telangana at 0000 UTC of today, the 21<sup>st</sup> May, 2025.

Scattered to broken low and medium clouds with embedded intense to very intense convection lay over westcentral Bay of Bengal, Andaman Sea. Scattered low and medium clouds with embedded moderate to intense convection lay over north Bay of Bengal and isolated weak to moderate convection lay over rest of Bay of Bengal.

#### \*PROBABILITY OF CYCLOGENESIS (FORMATION OF DEPRESSION) DURING NEXT 168 HRS:

24 HOURS	24-48 HOURS	48-72 HOURS	72-96 HOURS	96-120 HOURS	120-144 HOURS	144-168 HOURS
NIL	NIL	NIL	NIL	NIL	NIL	LOW

\*NOTE: EVERY 24HR FORECAST IS VALID UPTO 0300 UTC (0830 IST) OF NEXT DAY

### ARABIAN SEA:

An upper air cyclonic circulation extending upto mid-tropospheric level lay over Eastcentral Arabian Sea off North Karnataka-Goa coasts at 0000 UTC of today, the 21<sup>st</sup> May 2025 and persisted over same region at 0300 UTC of today, the 21<sup>st</sup> May, 2025. Under its influence, a low-pressure area is likely to form over the same region during next 12 hours. Thereafter, it is likely to move nearly northwards and intensify further into a depression during subsequent 36 hours.

Associated scattered to broken low and medium clouds with embedded intense convection over eastcentral Arabian Sea, south Konkan-Goa & coastal Karnataka. Minimum cloud top temperature -60°C to -70°C.

Scattered to broken low and medium clouds with embedded intense to very intense convection lay over eastcentral Arabian Sea, Gulf of Cambay. Scattered low and medium clouds with embedded moderate to intense convection lay over northeast Arabian Sea off south Gujarat coast and also over south Arabian Sea, Lakshadweep Islands, Maldives & Comorin area and isolated weak to moderate convection lay over westcentral Arabian Sea.

#### \*PROBABILITY OF CYCLOGENESIS (FORMATION OF DEPRESSION) DURING NEXT 168 HRS:

24 HOURS	24-48 HOURS	48-72 HOURS	72-96 HOURS	96-120 HOURS	120-144 HOURS	144-168 HOURS
NIL	LOW	LOW	MOD	HIGH	HIGH	HIGH

\*NOTE: EVERY 24HR FORECAST IS VALID UPTO 0300 UTC (0830 IST) OF NEXT DAY

REMARKS: NIL

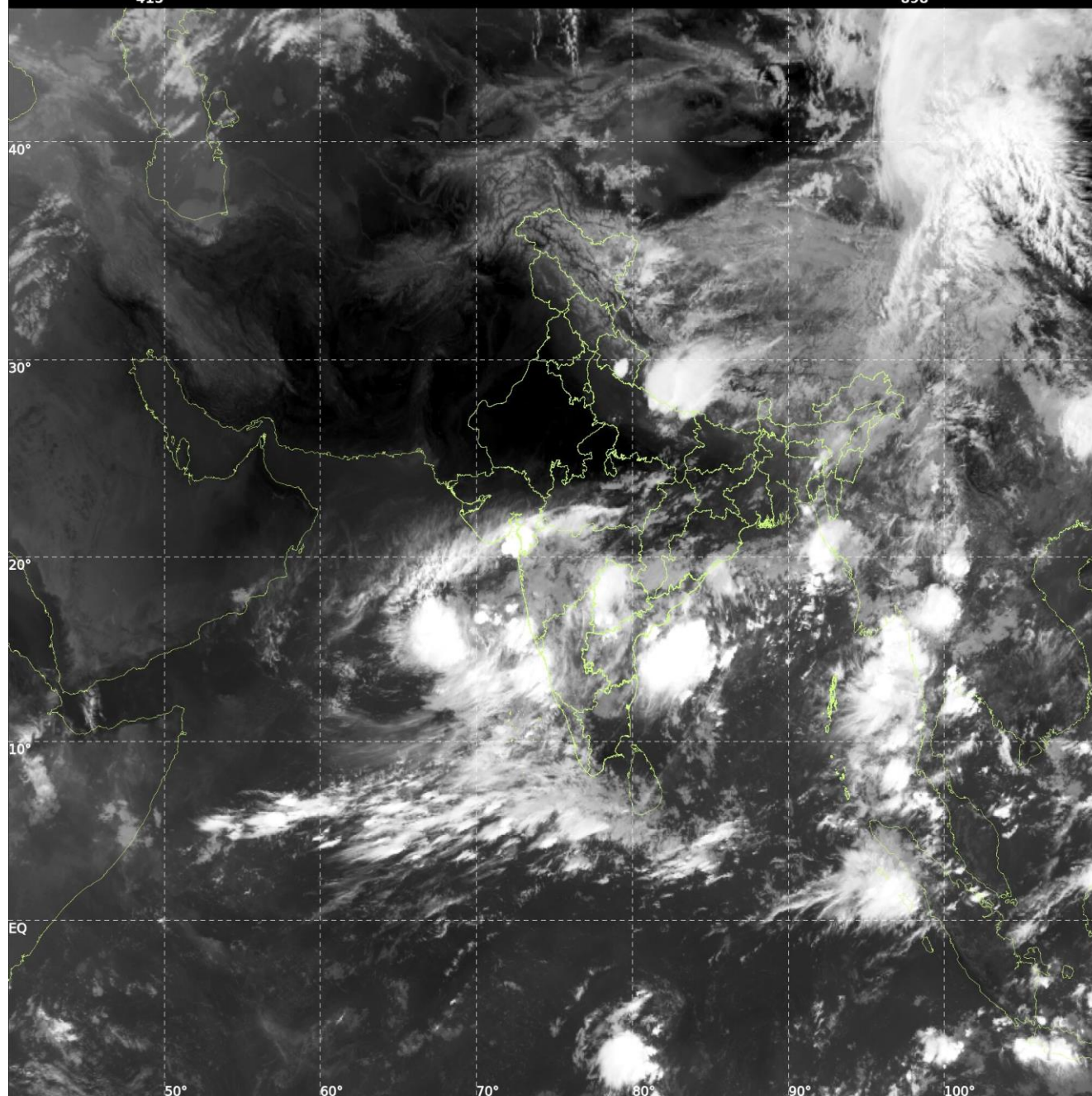
Cloud distribution: (a) Isolated: <25%, Scattered:25-50%, Broken: 51-75%, Solid:>75%, Convection Intensity: (a) Weak: Cloud Top Temperature(CTT)>-25°C,(b)Moderate:CTT:-25°Cto-40°C,(c)Intense:CTT: -41°Cto -70°Cand(d)Very Intense::Less than -70°C  
PROBABILITYOFCYCLOGENESIS(FORMATIONOFDEPRESSION):NIL:0%,LOW:1-33%,MODERATE:34-66%ANDHIGH:67-100%  
ThisisaguidanceBulletinforWMO/ESCAPPanelMembercountries.VisitrespectiveNationalwebsitesforCountry-specificBulletins



INSAT-3DS IMG, Thermal Infrared1 Count @ 10.83  $\mu\text{m}$   
GMT:21-05-2025/(0300-0327) IST:21-05-2025/(0830-0857)  
L1C MERCATOR (LINEAR STRETCH: 1%)

415

898



Cloud distribution: (a) Isolated: <25%, Scattered:25-50%, Broken: 51-75%, Solid:>75%, Convection Intensity: (a) Weak: Cloud Top Temperature(CTT)>-25°C,(b)Moderate:CTT:-25°Cto-40°C,(c)Intense:CTT: -41°Cto -70°Cand(d)Very Intense::Less than -70°C  
PROBABILITYOFCYCLOGENESIS(FORMATIONOFDEPRESSION):NIL:0%,LOW:1-33%,MODERATE:34-66%ANDHIGH:67-100%  
ThisisaguidanceBulletinforWMO/ESCAPPanelMembercountries.VisitrespectiveNationalwebsitesforCountryspecificBulletins